



Tangly, A Pantomime

Visual Guide

This visual guide is designed for visitors to the Relaxed Performance of Tangly. It contains information about the play and lots of images to help prepare anyone who may be anxious (or curious) about their visit. This visual guide also has information to help you to find your way to the LSPU Hall.

Contents

Where is the play?.....	2
Inside the building.....	4
Inside the theatre.....	11
How long does the play last?.....	14
What is the play about?.....	14
Who are the characters?.....	14
What will the play look like?.....	17

Where is the play?

This play is being show at the LSPU Hall Mainstage. The address is 3 Victoria Street, St John's, Newfoundland. Here is a photo of the building.



Here is a photo of the main entrance.





There are several parking lots and metered street parking nearby. Visit <http://rca.nf.ca/purchase-tickets/frequently-asked-questions/> for the full map.

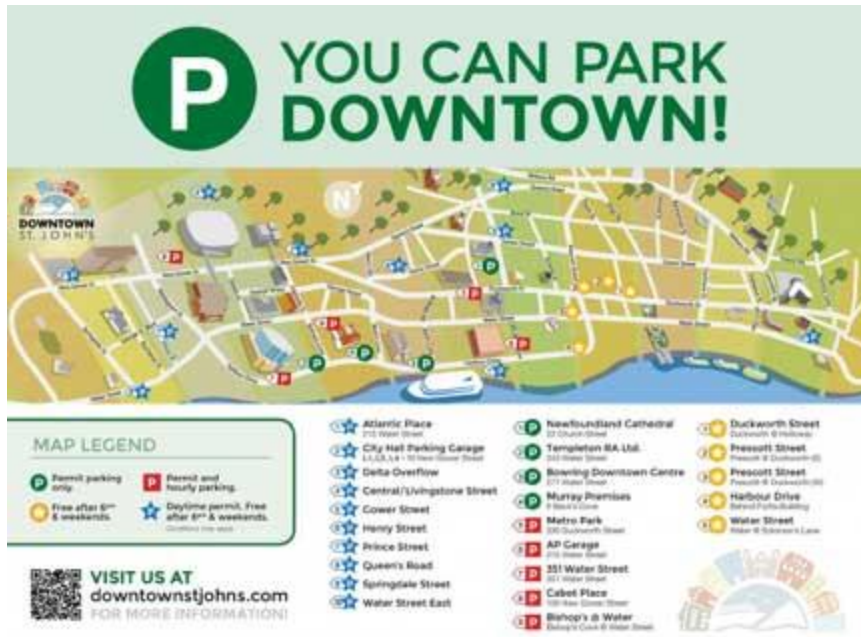
Parking

We have free parking for our patrons after 6 pm on weekdays, and on weekends.

- [Harbour Drive](#) Parking Lot
Located outside the Fortis Building at Harbourfront and Prescott.
100 parking spaces are available First Come, First Serve.
- Prescott Street (Bluedrop Performance Building) Parking Lot
Located north of Duckworth, behind the [Bluedrop Performance Building](#). 60 parking spaces are available First Come, First Serve.

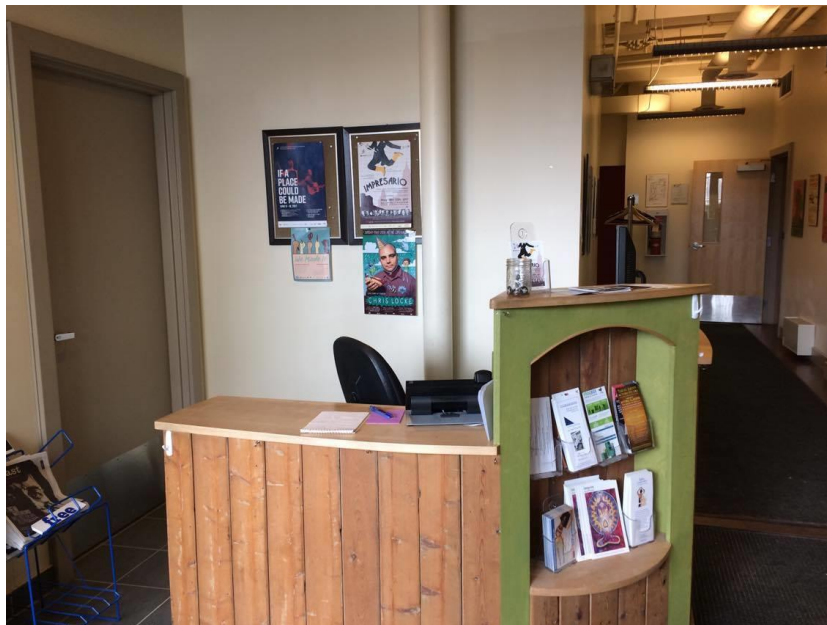
Walking directions

We're just west of the intersection at Prescott & Duckworth, on the north side. There are a set of stairs between two concrete walls with a mural of an applauding audience. The hall is at the top of the stairs.



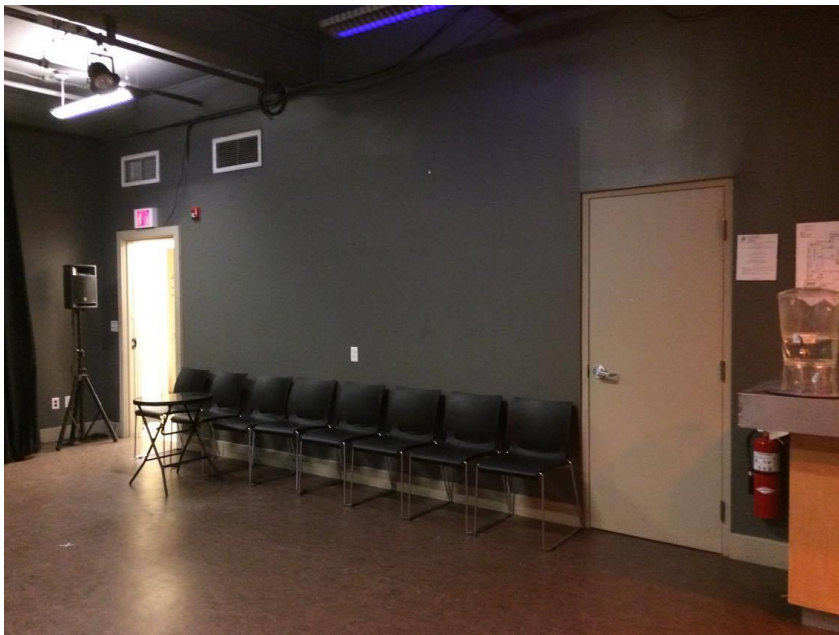
Inside the Building

This is the entrance to the building. It has a small foyer that may be busy before the show. We also have the Cox & Palmer Second Space downstairs with a place to buy a drink and have a seat. This is also the place to come and relax if you need some quiet time during the show.





This is the bar area where you can buy a drink.



This is the seating area.

This is the Box Office. You may have to wait in line if you are picking up your tickets or buying tickets at the door.



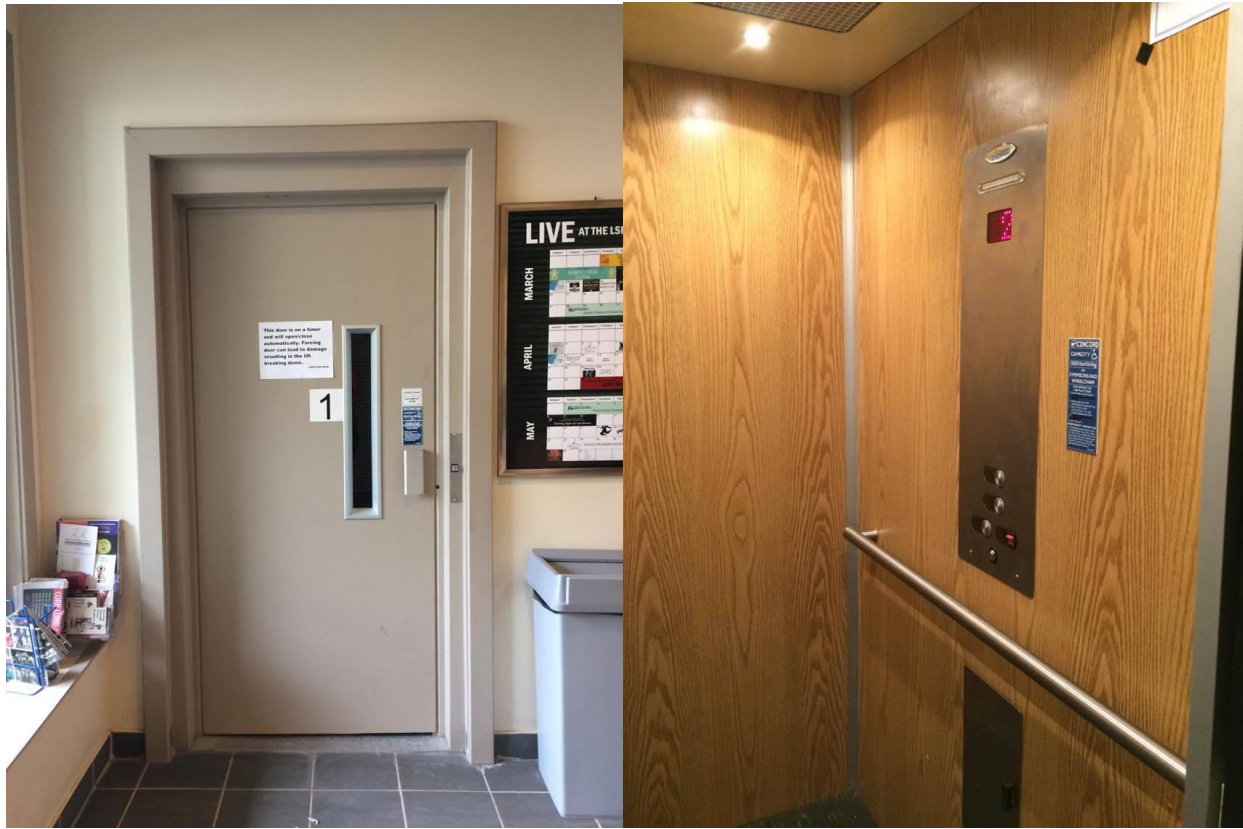
This is the corridor in the main floor of the lobby. There are posters hanging from shows that have taken place at the LSPU Hall.



At the end of the corridor by the entrance to the theatre there are the washrooms.



Our main theatre is upstairs at the LSPU Hall. If you don't want to take the stairs we also have a lift (elevator) that can take you up to your seat. This is what our lift (elevator) looks like from the outside and inside.



If you would like to take the lift (elevator) upstairs, please let the Box Office know when you arrive and we can have an usher take you up. The lift (elevator) is slow moving and it only takes a few moments to get to the theatre.

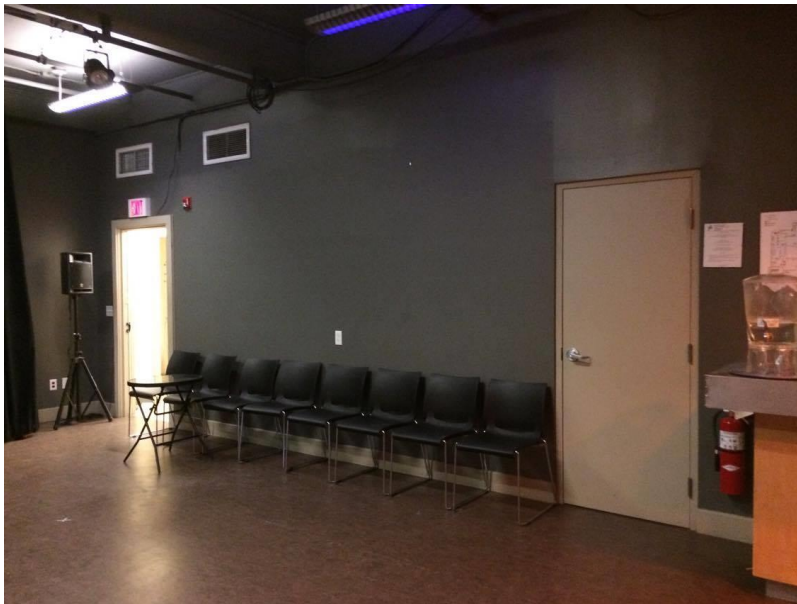
This is what you see when you get out of the lift (elevator) at the theatre floor and you walk down the short hallway to your seat.



There will be ushers throughout the lobby who can answer your questions and give you directions. An usher will tear your ticket as you enter the lobby and give you a program which will tell you more about the actors and information about the play.

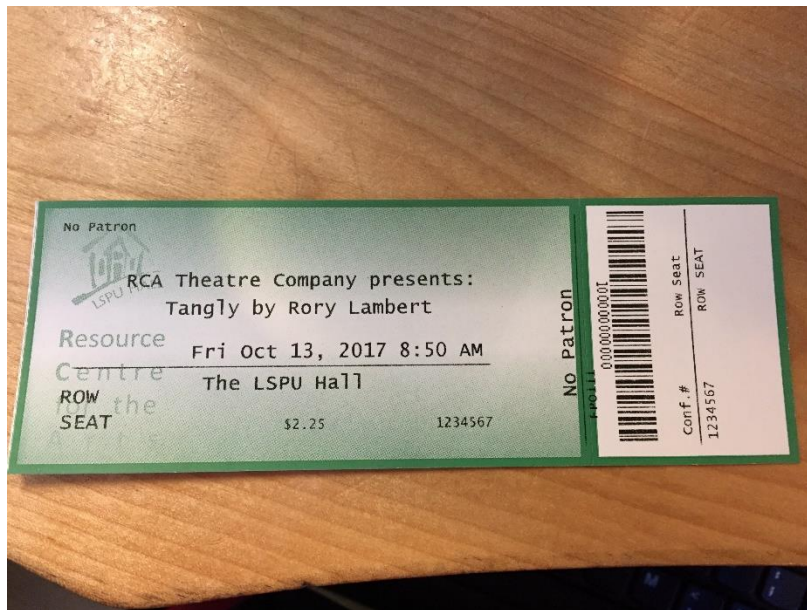
The theatre doors will open about 30 minutes before the show begins. If you arrive earlier, there are some seats where you can wait in the Cox & Palmer Second Space until the doors open.

If you need a break during the show, the Second Space is where you can come to have some quiet time.

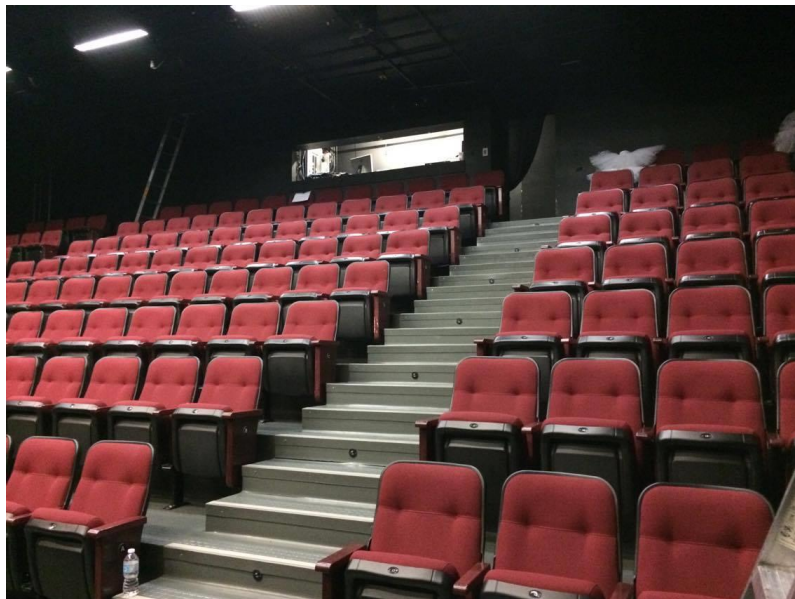


Inside the theatre

Your ticket will look like this and will tell you which section you are sitting in.



This is what the inside of the theatre looks like as you come into the room.



Your seat row and seat number will be on your ticket.

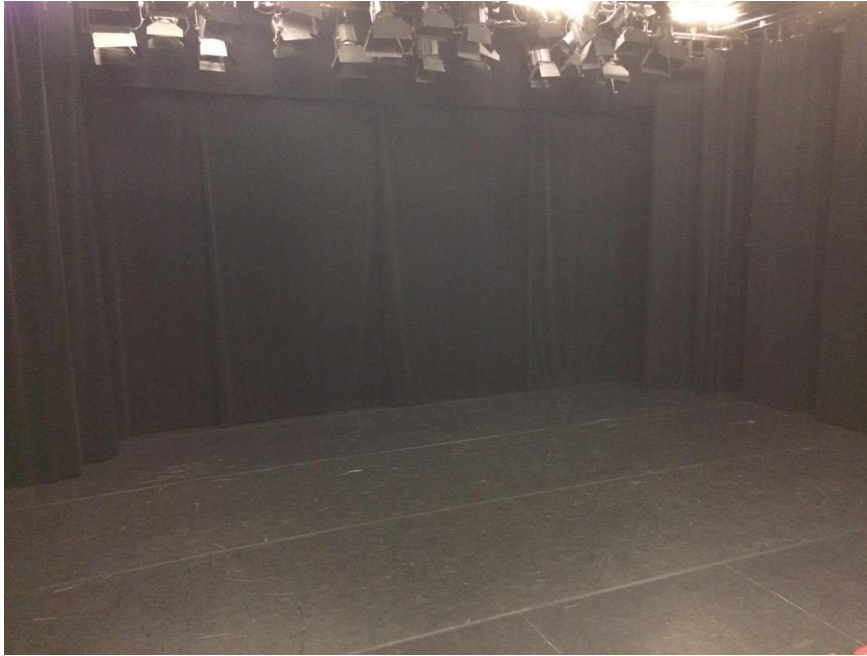
You can find the row letter at the end of the row here.



You can find your seat number here on the seats.



This is what the stage looks like when you are sitting in the audience.



We also have a balcony section in the theatre that also has a few seats and a door that brings you out to the stairs to get down to the quiet room during the show if you need to. Here is the balcony and the exit door from there.



How long does the play last?

The play is about 75 minutes long with 1 break (the intermission.)

What is the play about?

Tangly is a Christmas Pantomime that blends *Rapunzel* with a pinch of *Rumplestiltskin*, a tablespoon of *Gift of the Magi* and a heaping helping of the classic Newfoundland *Mummers Play*. When spunky Rapunzel Rhubarb is kidnapped by the Old Hag, it's up to Buttons to save her. With a pocketful of sea urchins, a pet jellyfish and a gang of pals at his side he'll venture up the harbour and down the shore; from Greens Harbour to Old St. John's Towne to the depths of the Winter Woods and magical Macaroni Tower to save the day. A play brimming with song and dance, magic spells, audience interaction and zany wit and charm, *Tangly* will kick off Christmas with a smile on your face and a glow in your cheeks. This is a show for the whole family to enjoy.

Who are the characters?



Rory Lambert is playing the role of Buttons.

Rory Lambert is an actor, writer and dramaturg from Central Newfoundland with a BFA from Sir Wilfred Grenfell College and an Apprenticeship from the Hippodrome State Theatre, Gainesville, Florida. As a performer Rory was most recently seen on stage in the National Arts Centre tour of Andy Jones *Tartuffe* and in Trinity for his tenth season with Rising Tide Theatre's Seasons in the Bight. He's served as the host of WorkplaceNL and Rogers TV's Who Wants to Save a Life for nine years and you may recognize him as the

voice of Morris the Moose in Irving's recent Memories of Goobies ad campaign. As a writer, Rory has had works produced at Rising Tide Theatre (Trinity), Rebel Island Theatre (Carbonear), Worlds End Theatre (Fogo), The Victoria Playhouse (PEI) and the Grand Bank Theatre Festival. He is currently working on several writing projects, not the least of which is the development of a television pilot with colleague Deidre Gillard-Rowlings and producer Barbara Doran.



Laura Huckle is playing the role of Rapunzel

Laura Huckle is so thrilled to be performing in Tangly! Laura started performing at a young age and since then has performed in films, television/commercials and in theatres across Canada. Laura graduated with A BFA Hons from Sir Wilfred Grenfell College in 2010 and is currently the Artistic Associate at RCA Theatre Company. Pantomimes are a tradition that Laura grew up watching in the UK and she is over the moon that this family tradition has made its way to RCA Theatre Company. Laura would like to thank her friends and family for supporting her on her theatrical journey. I hope you enjoy the show!



Colin Furlong

Colin Furlong is playing the roles of the Prince, Mr Cooper and the King

Colin Furlong is an actor from Mount Pearl, NL who has worked in theatres throughout the province, country, and abroad. Recent credits include *The Colony of Unrequited Dreams* (Artistic Fraud), and *Tibb's Eve* (Mindless Theatrics). Other credits include *Tempting Providence*, *Stones in his Pockets*, *Leaving Home*, *The Cripple of Inishmaan* (Theatre Newfoundland and Labrador); *In The Backseat* (Eastern Front Theatre); *The Ogre's Purse* (RCAT); *Brand New Beat* (Rising Tide Theatre); *Oedipus Rex*, *Antigone* (Arts and Culture Centres); and as Harry Holden on CBC Television's *Republic of Doyle*. Colin holds a BFA in theatre from Memorial University, Grenfell Campus.



Deidre is playing the role of the Hag.

Deidre is an actor and writer from The Great Northern Peninsula. She graduated with a BFA from Memorial University in 1994. Upon graduation, she and fellow classmates founded BareBoards Theatre. From 2002-2012 she toured with Theatre Newfoundland Labrador's production of *Tempting Providence*, by Robert Chafe, performing the role of MYRABENNETT 722 times in England, Ireland, Scotland, Wales, Australia, the US and extensively throughout Canada. She has worked with theatre companies from coast to coast. Selected theatre credits include: *Marion Bridge*, *How it Works*, *Kiss the Sun Kiss the Moon*, *Romeo and Juliet*, *The Taming of the Shrew*, *Alice Through the Looking Glass (NAC)*, *The Anger in Ernest and Ernestine*, *Eli and the death Curse*, *Top Girls*, *Pillow Trade & Fly Me to the Moon*, *February*, *Macbeth*, *Mother Courage and Her Children*, *The Diary of Anne Frank*, *John Gabriel Borkman*, *As You Like It*, *Anthony and Cleopatra*, *Treasure Island*, *The Breathing Hole*. Selected film and TV credits include: *Heyday!* (feature film), *Republic of Doyle* (tv), *The Last of the Snow & Four Sisters* (short films). Her most recent writing project is a Newfoundland based soap opera entitled - *The Storys* - which is in pre - development with CTV. She is also the author of a children's book - *Get to Bed*, and a screen play - *The Devil's House*.



Paul is very happy to be working with the Resource Centre for the Arts for the first time, and to be working with such a fantastic cast and crew! Trained as an actor at the Victorian College of the Arts in Melbourne, Australia, Paul worked extensively in Melbourne and Ontario before relocating with his family to Newfoundland. Work here in Newfoundland includes 4 seasons at Perchance Theatre at Cupids in various roles including; *Clarence* (RICHARD III), *Orsino* (TWELFTH NIGHT), *Capulet* (ROMEO & JULIET), and *Macbeth* (MACBETH). Other recent stage roles include; *Leap* (LEAVE OF ABSENCE – New Curtain Theatre), *Jackie “Dad” Elliot* (BILLY ELLIOT – Atlantic Light), *Pip/Theo Wexler* (THREE DAYS OF RAIN – Sweetline), *Lonny* (ROCK OF AGES - TADA), and *Dr. Fine* (NEXT TO NORMAL – Best Kind). Having appeared in numerous short films, and two

episodes of REPUBLIC OF DOYLE, Paul can be seen in the recurring role of *Vanstone* on the TV series: FRONTIER, streaming now through Crave TV in Canada, and worldwide through Netflix.

What will the play look like?



- The story is told by the cast through words, song, music, dance and movement.
- All the audience sit in rows facing the stage.
- The stage is the space in front of the audience where the characters will perform. Audience members are not allowed onto the stage.
- You will have a wand if you like when you come in and you are welcome to wave the wands as you do your spells with Buttons throughout the show. If you would rather watch that is great too!

- In pantomimes, some of the actors pretend to be men or women. Sometimes men dress as women and vice versa.
- Sometimes the actors will dance to music that is pre-recorded and sometimes the actors will play musical instruments on the stage.
- At the very end of the play, the actors will come out on the stage and bow and the audience can applaud.