



If A Place Could Be Made

Visual Guide

This visual guide is designed for visitors to the Relaxed Performance of If A Place Could Be Made. It contains information about the play and lots of images to help prepare anyone who may be anxious (or curious) about their visit. This visual guide also has information to help you to find your way to the LSPU Hall.

Contents

Where is the play?.....	2
Inside the building.....	4
Inside the theatre.....	11
How long does the play last?.....	14
What is the play about?.....	14
Who are the characters?.....	14
What will the play look like?.....	17

Where is the play?

This play is being show at the LSPU Hall Mainstage. The address is 3 Victoria Street, St John's, Newfoundland. Here is a photo of the building.



Here is a photo of the main entrance.





There are several parking lots and metered street parking nearby. Visit <http://rca.nf.ca/purchase-tickets/frequently-asked-questions/> for the full map.

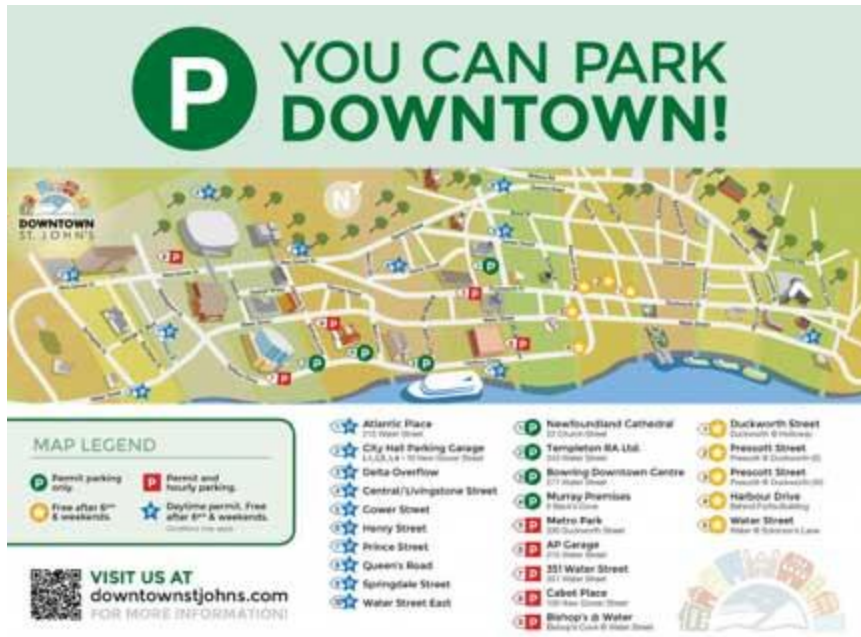
Parking

We have free parking for our patrons after 6 pm on weekdays, and on weekends.

- [Harbour Drive](#) Parking Lot
Located outside the Fortis Building at Harbourfront and Prescott.
100 parking spaces are available First Come, First Serve.
- Prescott Street (Bluedrop Performance Building) Parking Lot
Located north of Duckworth, behind the [Bluedrop Performance Building](#). 60 parking spaces are available First Come, First Serve.

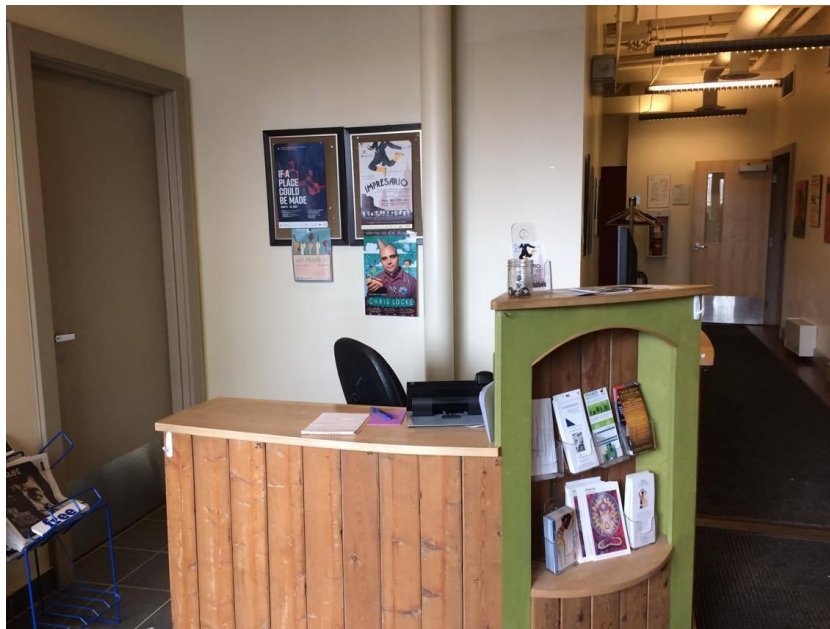
Walking directions

We're just west of the intersection at Prescott & Duckworth, on the north side. There are a set of stairs between two concrete walls with a mural of an applauding audience. The hall is at the top of the stairs.



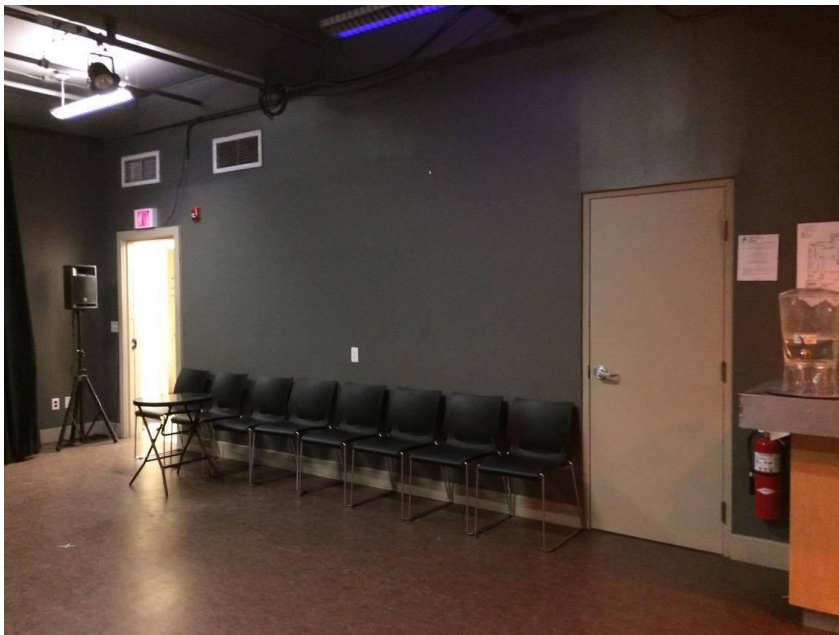
Inside the Building

This is the entrance to the building. It has a small foyer that may be busy before the show. We also have the Cox & Palmer Second Space downstairs with a place to buy a drink and have a seat. This is also the place to come and relax if you need some quiet time during the show.





This is the bar area where you can buy a drink.



This is the seating area.

This is the Box Office. You may have to wait in line if you are picking up your tickets or buying tickets at the door.



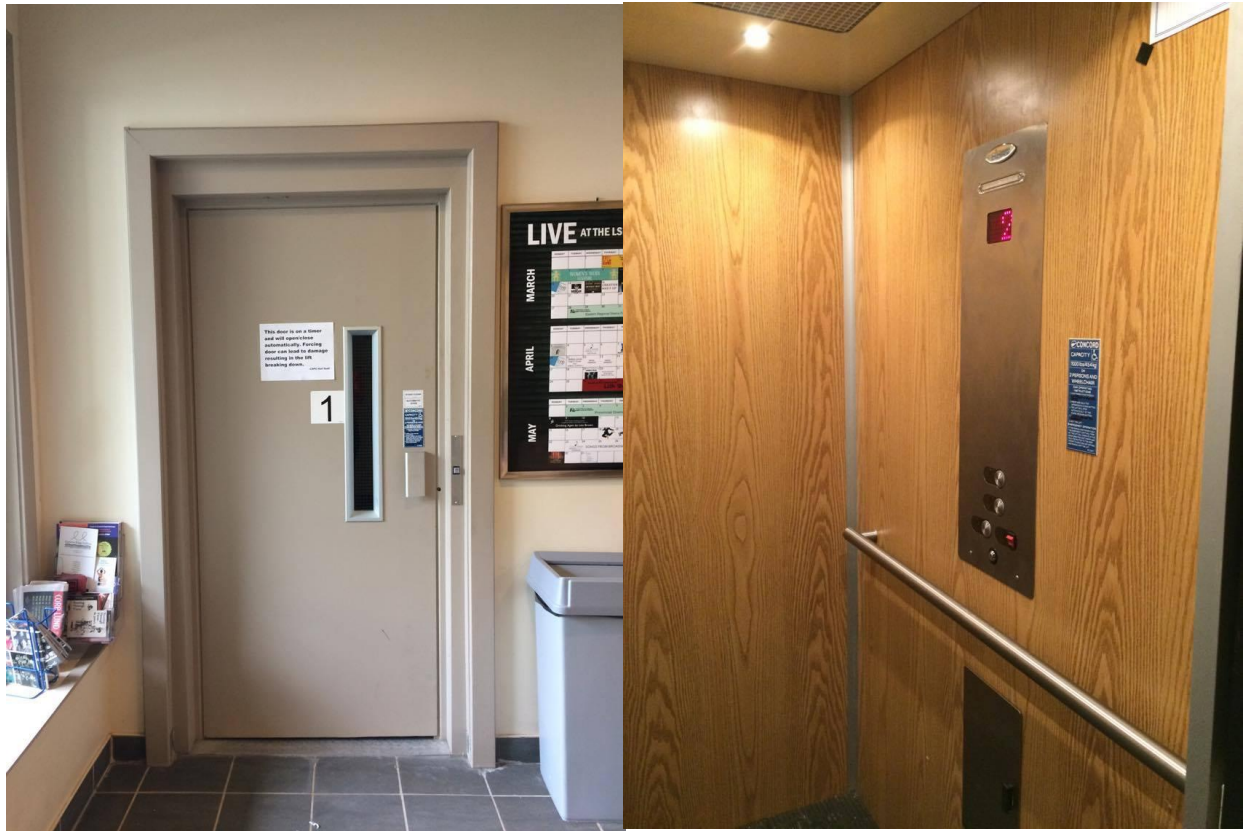
This is the corridor in the main floor of the lobby. There are posters hanging from shows that have taken place at the LSPU Hall.



At the end of the corridor by the entrance to the theatre there are the washrooms.



Our main theatre is upstairs at the LSPU Hall. If you don't want to take the stairs we also have a lift (elevator) that can take you up to your seat. This is what our lift (elevator) looks like from the outside and inside.



If you would like to take the lift (elevator) upstairs, please let the Box Office know when you arrive and we can have an usher take you up. The lift (elevator) is slow moving and it only takes a few moments to get to the theatre.

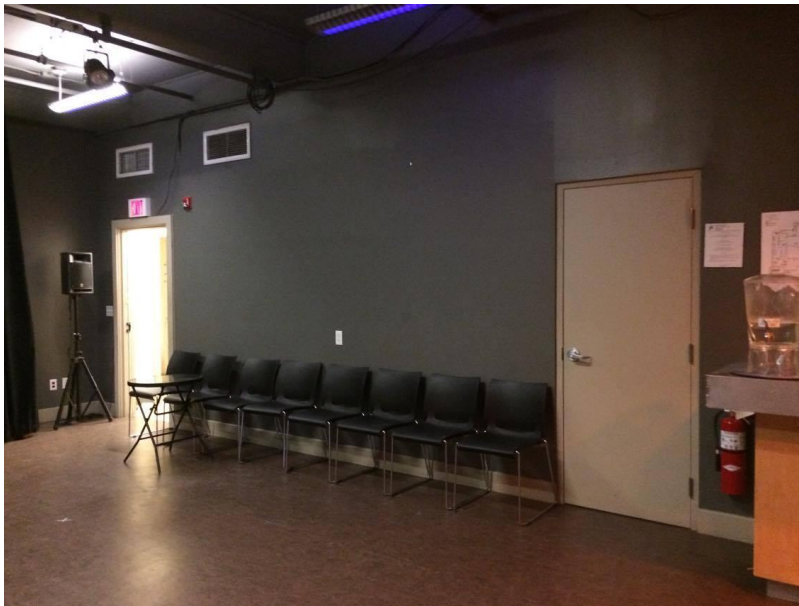
This is what you see when you get out of the lift (elevator) at the theatre floor and you walk down the short hallway to your seat.



There will be ushers throughout the lobby who can answer your questions and give you directions. An usher will tear your ticket as you enter the lobby and give you a program which will tell you more about the actors and information about the play.

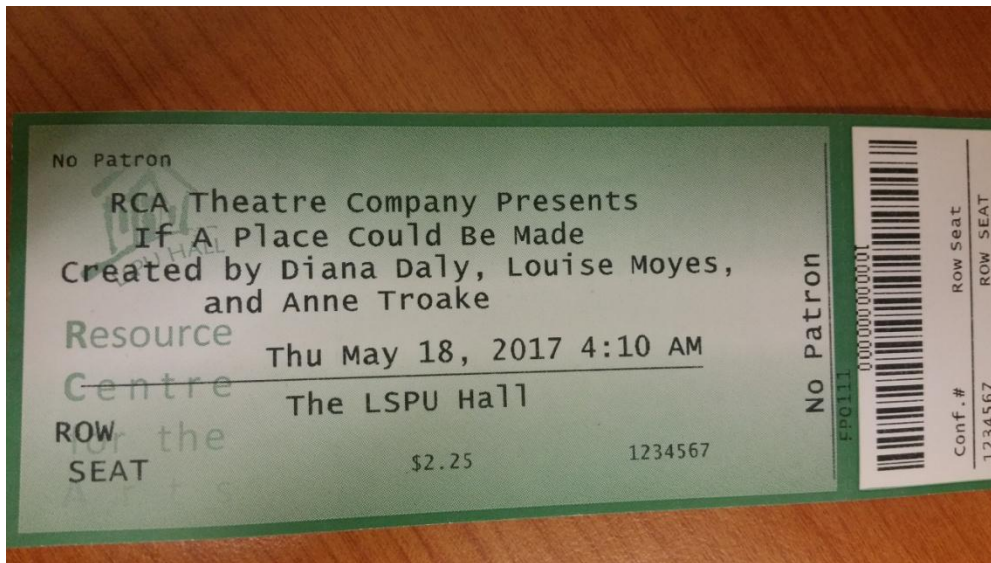
The theatre doors will open about 30 minutes before the show begins. If you arrive earlier, there are some seats where you can wait in the Cox & Palmer Second Space until the doors open.

If you need a break during the show, the Second Space is where you can come to have some quiet time.

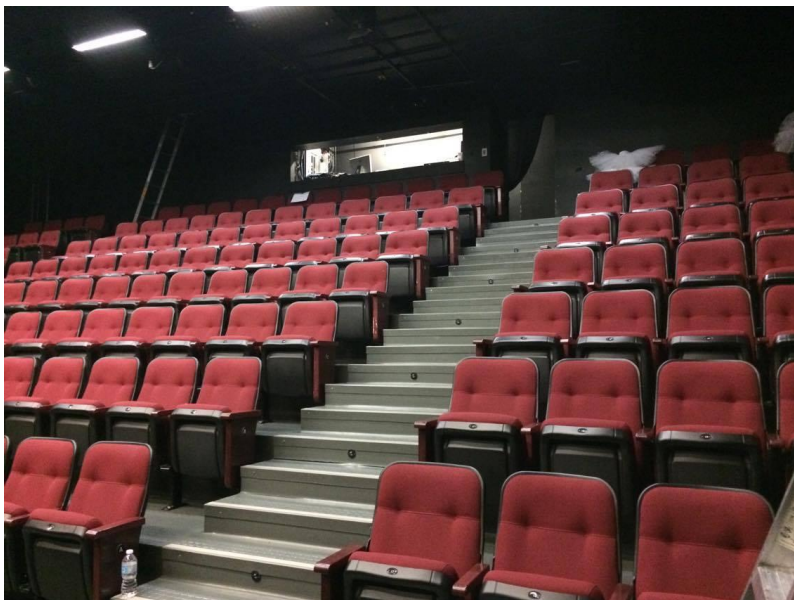


Inside the theatre

Your ticket will look like this and will tell you which section you are sitting in.



This is what the inside of the theatre looks like as you come into the room.

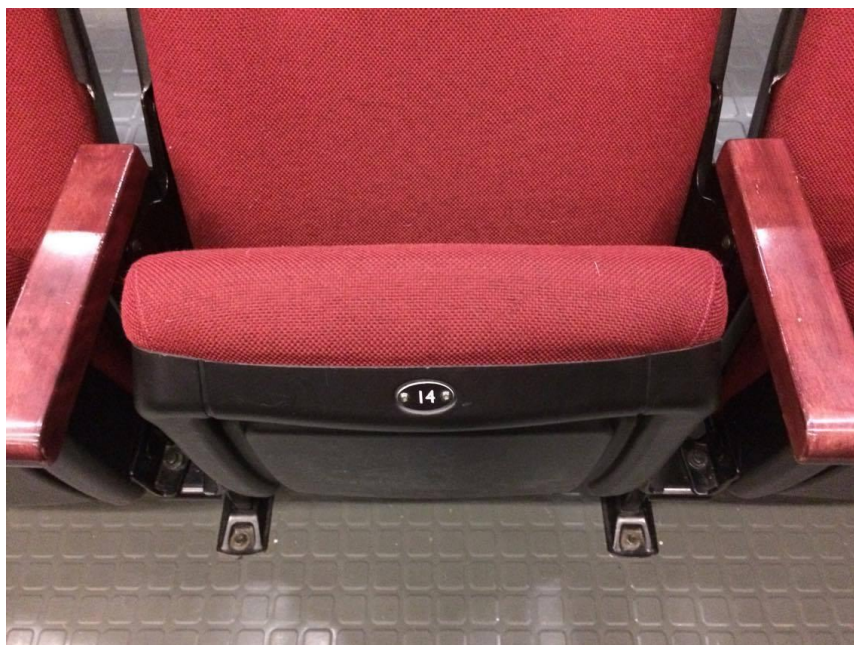


Your seat row and seat number will be on your ticket.

You can find the row letter at the end of the row here.



You can find your seat number here on the seats.



This is what the stage looks like when you are sitting in the audience.



We also have a balcony section in the theatre that also has a few seats and a door that brings you out to the stairs to get down to the quiet room during the show if you need to. Here is the balcony and the exit door from there.



How long does the play last?

The play is about 75 minutes long with no break (intermission.)

What is the play about?

Kitty and Daniel Daly of Riverhead, St Mary's Bay, had 12 children, six of whom were very tall and six of whom had skeletal dysplasia which today is also referred to as persons of short stature.

The Daly Family Collective – their granddaughter (and great-niece), singer-songwriter Diana Daly, dancer-actor Louise Moyes, and director/collaborator Anne Troake have been asked to tell their stories. In a journey of friendship and song, Diana and Louise bring the Daly family's memories to life through powerful images, tales, songs, dance, laughter, and a bit of Carlton Showband! *If A Place Could Be Made* is a story about family, strong personalities, great faith, inclusion, expansion and making the best out of what we have been given.

Who are the characters?

This is Louise Moyes. **Dancer and storyteller Louise Moyes (St. John's)** performs and creates docu-dances; multidisciplinary and often bilingual shows working with the rhythms of voices and accents as if they were a musical score. Combining her work as dancer, storyteller, filmmaker, and sociologist, Louise has made shows on topics including the collapse of the Newfoundland and Labrador Fisheries, similarities between Québécois and Newfoundlanders, walking her dog, and the life of Franco-Acadian NL musician Florence Leprieur. She has performed across Canada and in Germany, Italy, Iceland, New York, Australia, France and Brazil. She currently serves on the board of DanceNL. In 2016, Louise Moyes **Docudance celebrated its 25th** Anniversary and Louise was awarded **the Canada Council for the Arts Victor Martyn Lynch-Staunton Award** for Innovation in Dance. She was also Short-listed for the ArtsNL BMO Bank of Montreal **Artist of the Year Award 2016** (with co-nominee Robert Chafe and winner Opera on the Avalon).



This is Diana Daly. Diana is a multi-instrumentalist, performer, storyteller and songwriter. She is a native of St. John's, Newfoundland and has spent the last ten years living and working in BC, Montreal and Nunavik. A lover of story through song, Diana's favourite musical styles are Bluegrass, Americana, Old Irish ballads, Inuit music and Indie Rock and she has a keen interest in Ethnomusicology. Favourite music projects that she has created include: The Fogo Island Song Share, the Lhasa de Sela Youth Stage (now in its 6th year!!) for the Montreal Folk Festival, her EP "When Women Kill" (www.ladydaly.com), being the "Femme d'Orchestre" for the puppet show "Kate Crackerberry" and all of the musical experiences with her students in Puvirnituk and

Kangirsuk. Diana is deeply grateful to have the privilege to tell these stories about her extraordinary family with her dear friends, Louise Moyes and Anne Troake.



This is Anne Troake. Born in Twillingate, Newfoundland, **Anne Troake** is an award-winning filmmaker, dancer, choreographer, movement coach and installation artist. Her creations have been shown in galleries, theatres, public spaces and on broadcast networks worldwide. Her choreographic works include the community creation *InHabitant; Fever Dreams... perfect silence of glass; Bell* with Peter von Tiesenhausen; and *All Zoos Everywhere* with Louise Moyes. In 2005 Troake completed her landmark documentary on her Newfoundland sealing family *My Ancestors Were Rogues and Murderers* for the National Film Board of Canada, which continues to serve as a key document for discussions on resource usage and human-animal relations in universities across North America. Troake's dancefilms, including the international hit *Pretty Big Dig*, a ballet for heavy equipment, challenge the boundaries of the form. Her stereoscopic immersive dance film *OutSideIn* which features Carol Prieur of the Marie Chouinard Company and Bill Coleman of ColemanLemieux & Co. was selected by the Terra Nova Art Foundation to represent Newfoundland at the 2015 Venice Biennale. She was a featured artist in the nation-wide dance creation series *Body of Water: Creative Stream of Exchange*, 2015 and is an ongoing member of that collective. Anne is a core member of *The Margie Gillis Legacy Project* as both a creation collaborator and as a member of Gillis' international working group on movement and conflict resolution. In 2017 she will begin filming an experimental documentary on handwriting. Anne holds a Masters degree in Anthropology.

What will the play look like?





- Louise and Diana tell the story of the Daly family through words, music, dance and movement.
- All the audience sit in rows facing the stage.
- The stage is the space in front of the audience where Louise and Diana will perform. Audience members are not allowed onto the stage.
- Diana and Louise act out stories of real people, sometimes they pretend to be men or children.
- Sometimes the actors will use movement to 'represent' real objects.

- There is a screen behind the actors that changes now and then to show real pictures of the Daly family that the story is about.
- Diana plays guitar so sometimes in the play she might pick it up and play it and sing a song.
- At the very end of the play, Louise and Diana will come out on the stage and bow and the audience can applaud.