



THE LSPU HALL

Visual Guide

This visual guide is designed for visitors going to the LSPU Hall. It contains information about the Hall and lots of images to help prepare anyone who may be anxious (or curious) about their visit. This visual guide also has information to help you to find your way to the LSPU Hall.

Contents

The LSPU Hall.....	2
Inside the building.....	4
Inside the theatre.....	11

The LSPU Hall

This is the LSPU Hall. The address is 3 Victoria Street, St John's, Newfoundland. Here is a photo of the building.



Here is a photo of the main entrance.





There are several parking lots and metered street parking nearby. Visit <http://rca.nf.ca/purchase-tickets/frequently-asked-questions/> for the full map.

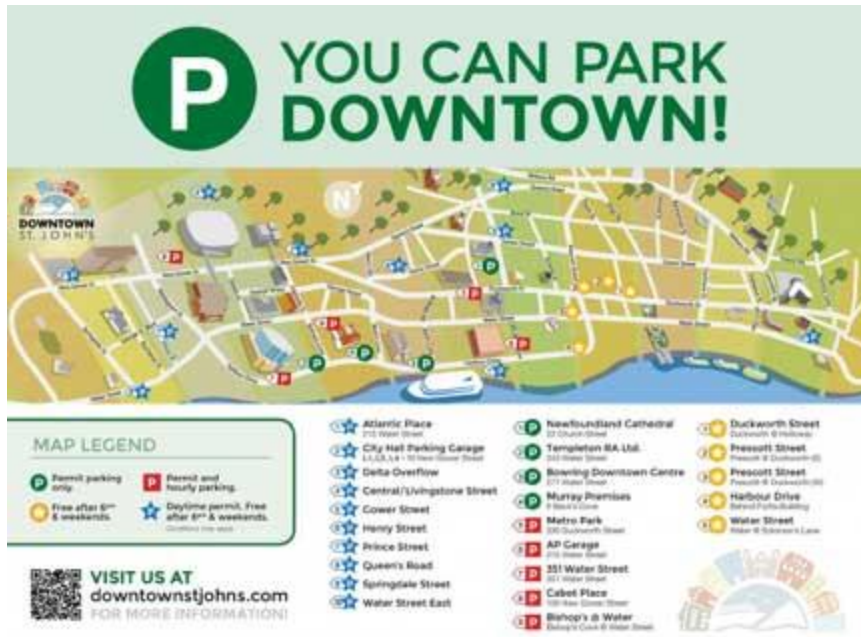
Parking

We have free parking for our patrons after 6 pm on weekdays, and on weekends.

- [Harbour Drive](#) Parking Lot
Located outside the Fortis Building at Harbourfront and Prescott.
100 parking spaces are available First Come, First Serve.
- Prescott Street (Bluedrop Performance Building) Parking Lot
Located north of Duckworth, behind the [Bluedrop Performance Building](#). 60 parking spaces are available First Come, First Serve.

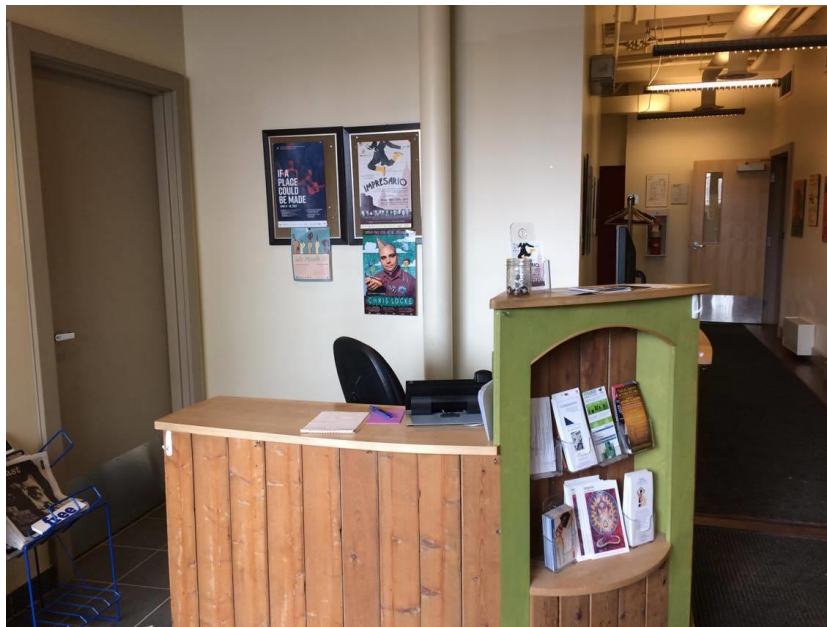
Walking directions

We're just west of the intersection at Prescott & Duckworth, on the north side. There are a set of stairs between two concrete walls with a mural of an applauding audience. The hall is at the top of the stairs.



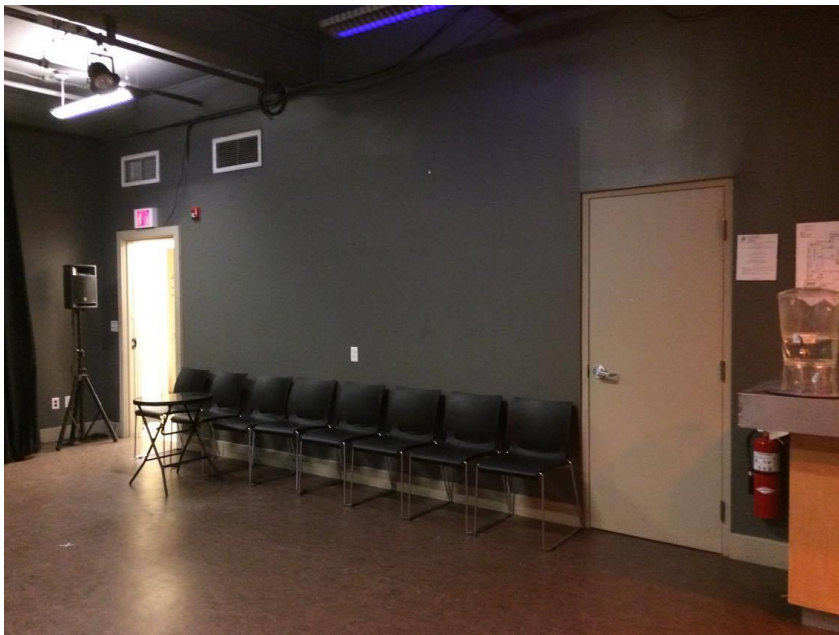
Inside the Building

This is the entrance to the building. It has a small foyer that may be busy before the event. We also have the Cox & Palmer Second Space downstairs with a place to buy a drink and have a seat. This is also the place to come and relax if you need some quiet time during the event.



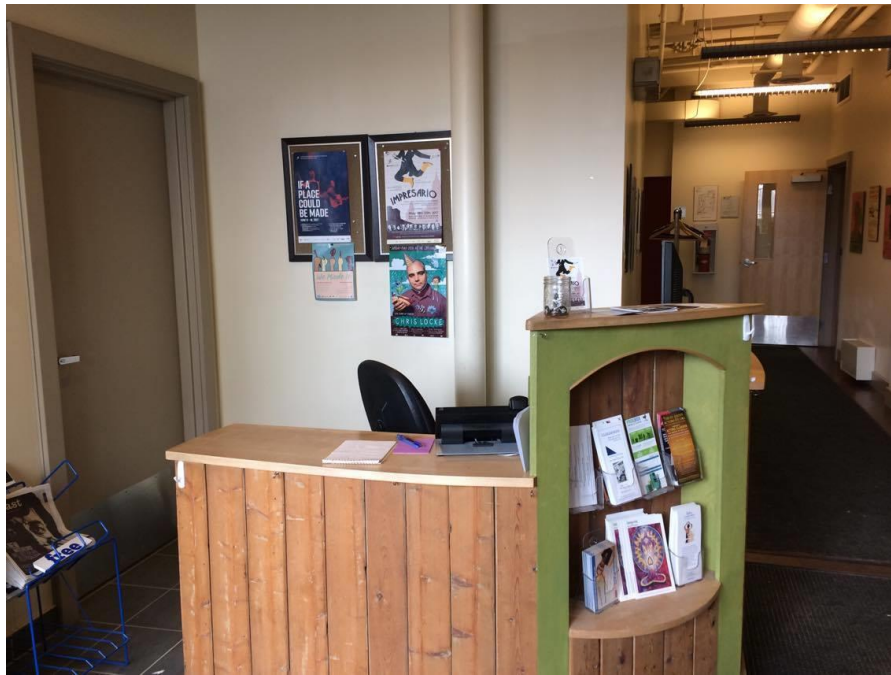


This is the bar area where you can buy a drink.



This is the seating area.

This is the Box Office. You may have to wait in line if you are picking up your tickets or buying tickets at the door.



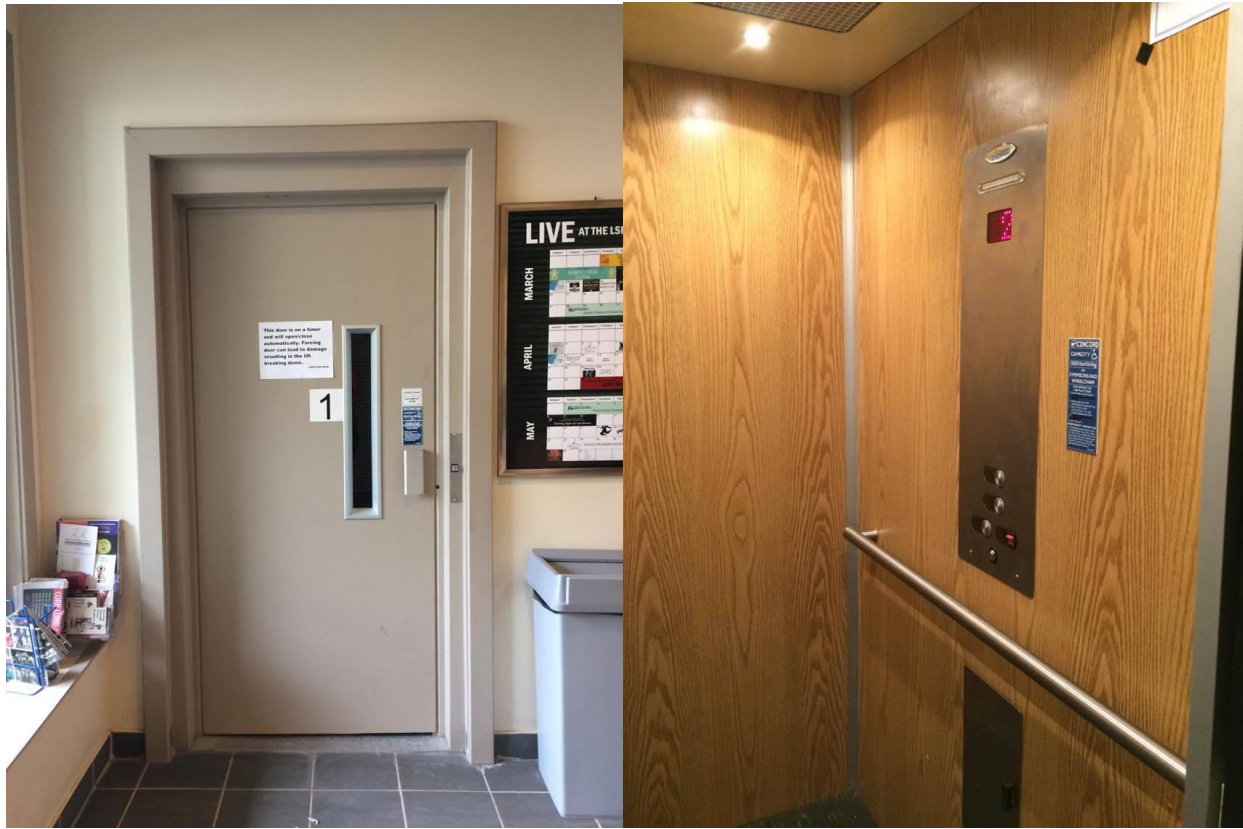
This is the corridor in the main floor of the lobby. There are posters hanging from shows that have taken place at the LSPU Hall.



At the end of the corridor by the entrance to the theatre there are the washrooms.



Our main theatre is upstairs at the LSPU Hall. If you don't want to take the stairs we also have a lift (elevator) that can take you up to your seat. This is what our lift (elevator) looks like from the outside and inside.



If you would like to take the lift (elevator) upstairs, please let the Box Office know when you arrive and we can have an usher take you up. The lift (elevator) is slow moving and it only takes a few moments to get to the theatre.

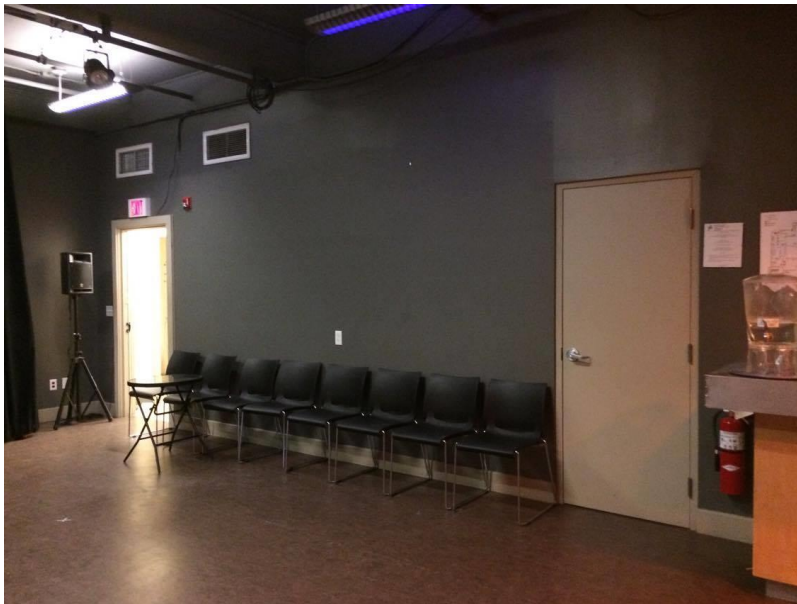
This is what you see when you get out of the lift (elevator) at the theatre floor and you walk down the short hallway to your seat.



There will be ushers throughout the lobby who can answer your questions and give you directions. An usher will tear your ticket as you enter the lobby and give you a program which will tell you more about the actors and information about the play.

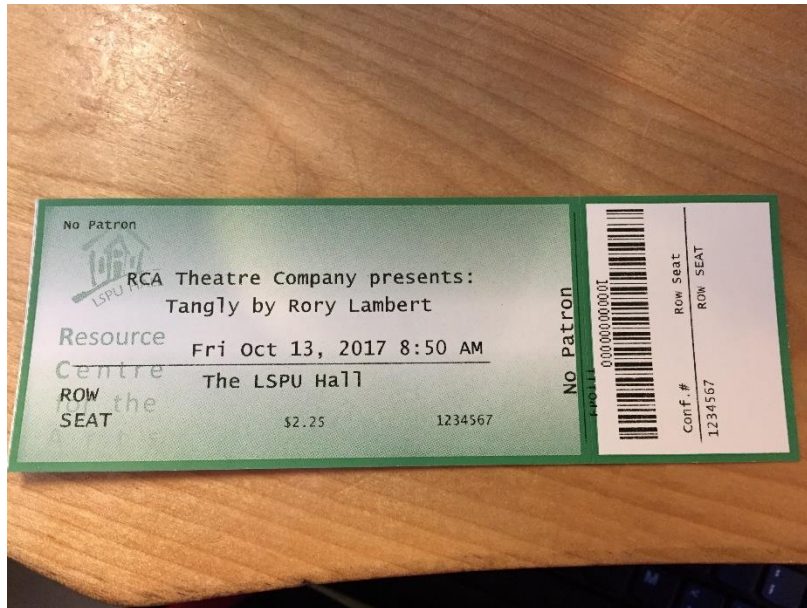
The theatre doors will open about 30 minutes before the show begins. Sometimes they open a little late because the actors are warming up on the stage or the technicians are getting the theatre ready. If you arrive earlier, there are some seats where you can wait in the Cox & Palmer Second Space until the doors open.

If you need a break during the show, the Second Space is where you can come to have some quiet time.

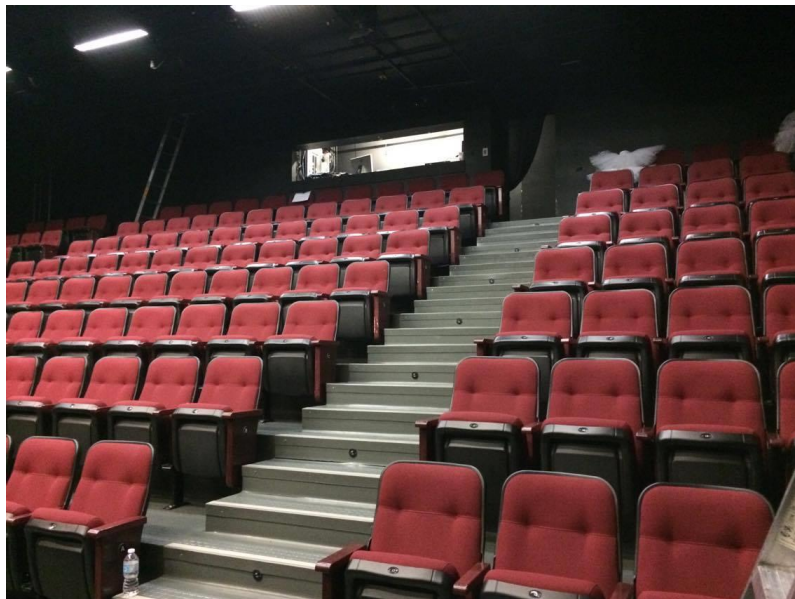


Inside the theatre

Your ticket will look like this and will tell you which section you are sitting in.



This is what the inside of the theatre looks like as you come into the room.



Your seat row and seat number will be on your ticket.

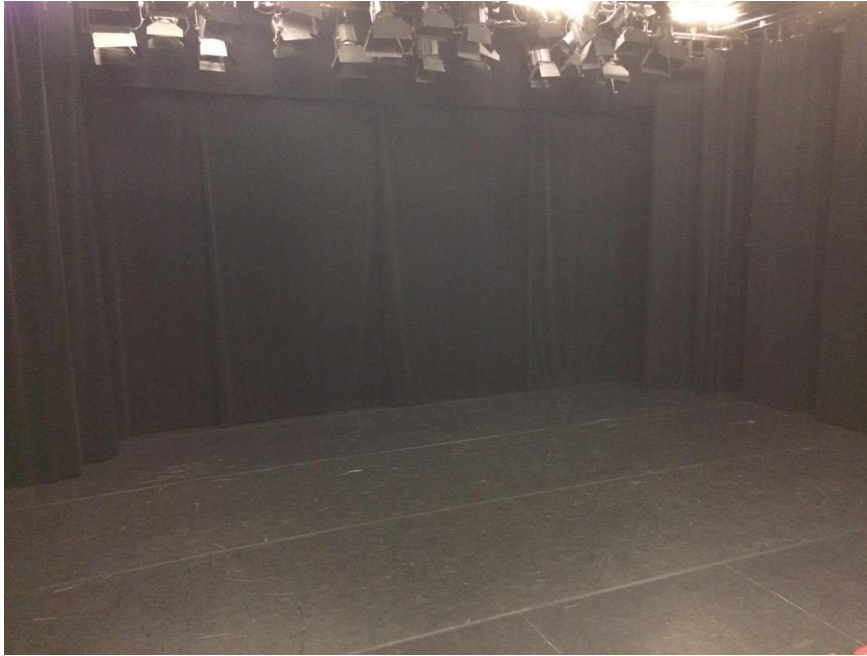
You can find the row letter at the end of the row here.



You can find your seat number here on the seats.



This is what the stage looks like when you are sitting in the audience.



We also have a balcony section in the theatre that also has a few seats and a door that brings you out to the stairs to get down to the quiet room during the show if you need to. Here is the balcony and the exit door from there.



Thank you so much for taking the time to read through this Visual Guide. If you have any further questions or concerns please don't hesitate to contact our Communications Manager at communications@rca.nf.ca.